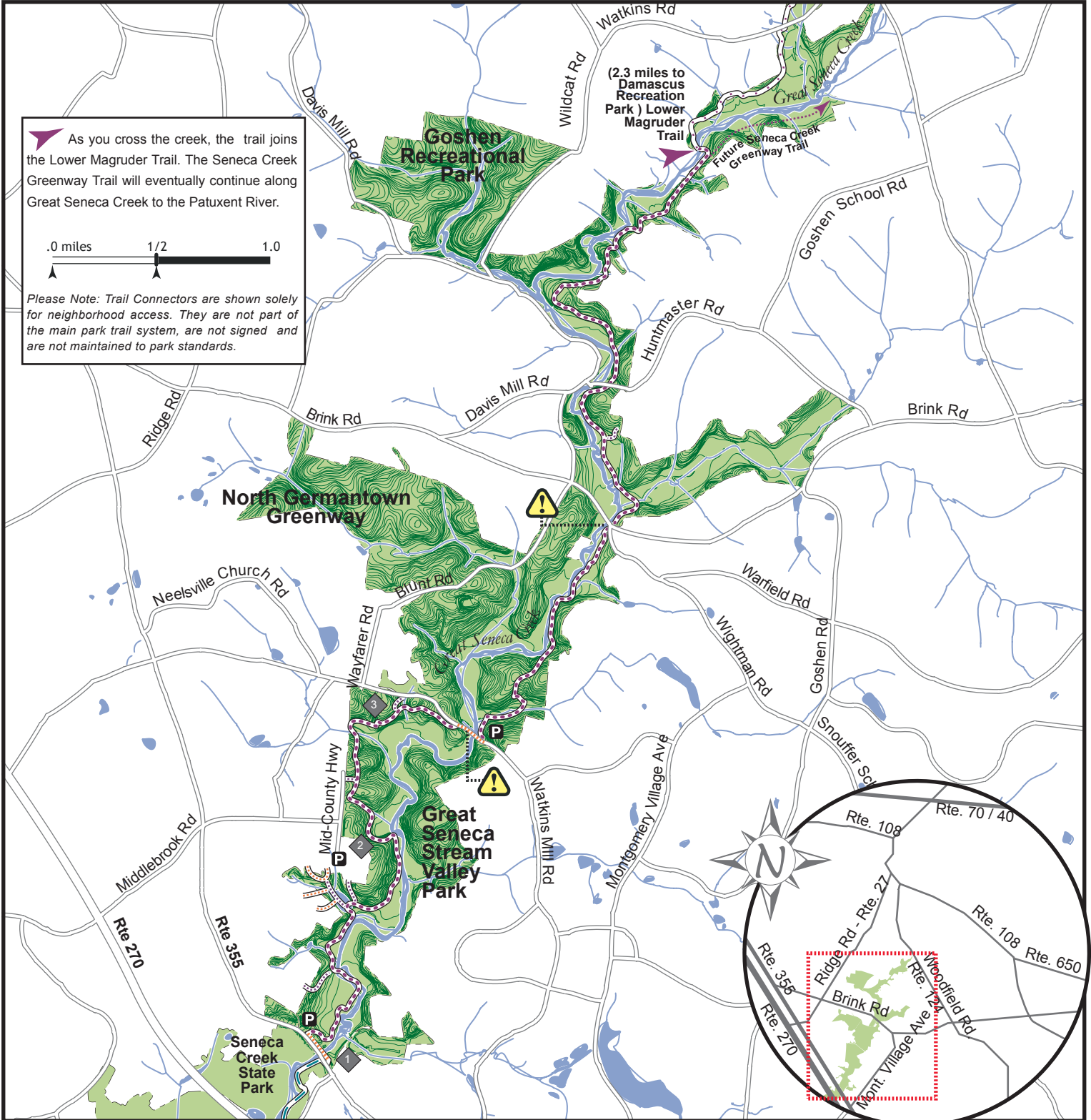


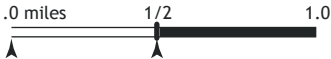
Seneca Creek Greenway Trail

Length: 7.1 miles of natural surface trails

Updated: aug05



As you cross the creek, the trail joins the Lower Magruder Trail. The Seneca Creek Greenway Trail will eventually continue along Great Seneca Creek to the Patuxent River.



Please Note: Trail Connectors are shown solely for neighborhood access. They are not part of the main park trail system, are not signed and are not maintained to park standards.

Trail Features & Mileage

Rte. 355 to Watkins Mill = 2.9 mi.
 Watkins Mill to Brink Rd = 1.5 mi.
 Brink Rd to Huntmaster = 0.9 mi.
 Huntmaster to Lower Magruder Trail = 1.8

- 1** Sidewalk & Underpass to State Park Trail
- 2** Scenic Overlook
- 3** Natural Rock Bridge

	Hard Surface Trail		Use extreme caution crossing road
	Trail Connector		Steep Slope
	Natural Surface Trail		Parking
	Trail Connector		Bathrooms
	Hiker Only Trail Connector		Drinking Water
	Parklands & Topography		Phone
	Streams & Ponds		Picnic Area



Park Police: 301.949.3010
 (Emergency Only)
 Park Manager: 301.972.6581